



EASYLITE® DISPLAY G 12

230~



HiEFFICIENT
PROFIlight.



Lamp head is rotatable by loosening the bolted connection in the connection box.



Socket/Bulb:
G12/HQI-T; CDM-T (excl.)
70W

Material:
Aluminium

Dimensions:
Product-L: 97 cm
Base-Ø/D: 19/11,5 cm
Head-Ø/L: 18/25 cm

Accessory/Included parts:
Conventional ballast (incl.)

Versions:
stone grey

Art. No.:
230605

Recommended bulb:
70W, 3000K, 6600lm
507130

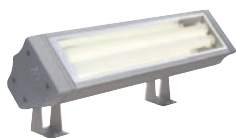



VANO TC Design by CDC

230~



IP65



Socket/Bulb:
2G11/TC-L EnergySaver (excl.)
36W

Versions:
silver grey

Art. No.:
229405

Material:
Aluminium/glass

Recommended bulb:
36W, 2700K, 2900lm, EEK=A
590144

Dimensions:
W/H/D: 52,5/10/11 cm

Accessory/Included parts:
Low-loss ballast (incl.)
Mounting bracket (excl.)


VANO DISPLAY Design by CDC

230~



IP65



Socket/Bulb:
G5/T5 EnergySaver (excl.)
2x 35W

Versions:
silver grey

Art. No.:
229400

Material:
Aluminium/glass

Recommended bulb:
35W, 3000K, 3320lm
548035

Dimensions:
W/H/D: 156/10/11 cm

Accessory/Included parts:
Electronic ballast (incl.)
Mounting bracket (excl.)

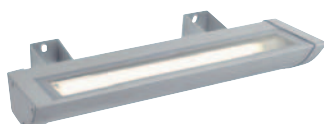
(PU see page 617)


VANO WING PL

230~



IP65



Socket/Bulb:
2G11/TC-L EnergySaver (excl.)
36W

Versions:
silver grey

Art. No.:
229392

Material:
Aluminium/glass

Recommended bulb:
36W, 2700K, 2900lm, EEK=A
590144

Dimensions:
W/H/D: 50/7,5/15,5 cm

Accessory/Included parts:
Low-loss ballast (incl.)
Mounting bracket (excl.)

Note:
Surface temperature of glass: 40°C.
Asymmetric reflector.


VANO WING

230~



IP65



Socket/Bulb:
G5/T5 EnergySaver (excl.)
54W

Versions:
silver grey

Art. No.:
229394

Material:
Aluminium/glass

Recommended bulb:
54W, 3000K, 4450lm
548054

Dimensions:
W/H/D: 123,5/7,5/15,5 cm

Accessory/Included parts:
Electronic ballast (incl.)
Mounting bracket (excl.)

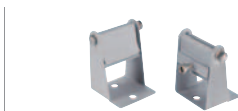
Note:
Asymmetric reflector.

(PU see page 617)



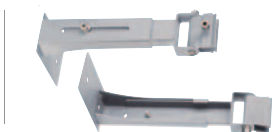


ACCESSORY for Vano



Bracket, short
Steel, silver grey,
2 pce.
Product-H: 9 cm
Base-L/W: 5/5 cm

Art. No.:
229402



Bracket, adjustable, short
Steel, silver grey,
2 pce.
Product-H: 19-27 cm
Base-L/W: 6/10 cm

Art. No.:
229403



Bracket, adjustable, long
Steel, silver grey,
1 pce.
Product-L: 47-80 cm
Base-L/W: 12/10 cm

Art. No.:
229406

For the wall installation of the Vano Display, 3 brackets (229406) are needed.

ACCESSORY for Vano Wing



Bracket
Steel, silver grey
2 pce.
Product-H: 13,5 cm
Base-L/W: 8/5 cm

Art. No.:
229395





VANO RGB Design by CDC

230~



Accessory/Included parts:

Electronic ballast (incl.)
Mounting bracket (excl.)
Controller (excl.)

Note:

Optimal operation of the lamps at
ta +10°C up to +40°C.
Below +10°C only operable with
100%. From +10°C dimmable.
Controllable with LIM®2 Controller
(470531), see below.

Socket/Bulb:

G5/T5 EnergySaver (excl.)
3x 35W

Material:

Aluminium

Dimensions:

W/H/D: 156/10/11 cm

Versions:

silver grey

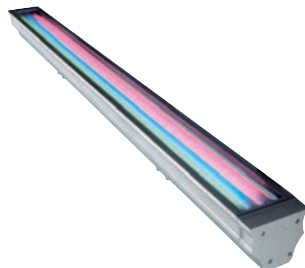
Art. No.:

229401

Recommended bulb:

35W red/green/blue
548175/-6/-7

(PU see page 617)



LIM®2 CONTROLLER Design by CDC

230~



Accessory/Included parts:

Flush-mounted housing (incl.)
IR receiver (incl.) at the front of the
housing.

Note:

LC-Display.
Flush-mounted installation possible.
Short circuit protected!
Optionally controllable via remote
control (470530), see below.

Control voltage:

4x 1-10V

Material:

Aluminium/plastic

Dimensions:

W/H/D: 11,7/3,7/9,7 cm

Versions:

alu natural

Art. No.:

470531

ACCESSORY for Vano RGB

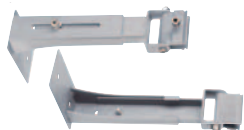


Bracket, short

Steel, silver grey,
2 pce.
Product-H: 9 cm
Base-L/W: 5/5 cm

Art. No.:

229402



Bracket, adjustable, short

Steel, silver grey,
2 pce.
Product-H: 19-27 cm
Base-L/W: 6/10 cm

Art. No.:

229403



Bracket, adjustable, long

Steel, silver grey,
1 pce.
Product-L: 47-80 cm
Base-L/W: 12/10 cm

Art. No.:

229406

For the wall installation of the Vano RGB, 3 brackets (229406) are needed.

ACCESSORY for LIM®2 Controller

2x
AA 1,5V

Remote control

Batteries (excl.)

L/W/H: 17,8/4,3/2 cm

Art. No.:

470530

With a LIM®2 controller 200 Vano RGB can be controlled. When installing the controller please adhere to the maximum allocation of the power circuits (per 16 Ampère-power circuit up to 30 Vano RGB.) The used bulbs must be identical and from the same manufacturer to provide an uniform colour distribution. A data sheet can be sent to you on request. The LIM®2 controller makes setting and calling up of colour of light or light level possible on keystrokes. 4 groups of lights with digital operating devices for a control voltage of 1-10V (e.g. fluorescent bulbs, low-voltage halogen, high-voltage halogen bulbs or LED applications) can be controlled, 4 light sequences pre-programmed can also be called up by keystrokes. Also a dynamic operational sequence of the setup light scenes is possible owing to selectable standing and blend over times. 4 different sequencing programs with 8 light scenes each are already programmed in the system. Further features are panic configuration, external switching entrance, variable time intervals. It is a comfortable system, whereby no prior knowledge is needed to operate it.


BIG DICE ES111 Design by CDC/FGL

 230~    3,5-10   2,2 IP55 

Socket/Bulb:
GU10/ES111 (excl.)
75W max.

Material:
Aluminium/glass

Dimensions:
L/W/H: 18/18/27 cm

Versions:
silver grey ▼

Art. No.:
230004

Recommended bulb:
75W, 24°, 2800K, 3500cd
575540

BIG DICE QRB Design by CDC/FGL

 230~ / 12~    3,5-10   4,5 IP55 

Socket/Bulb:
G53/QRB111 (excl.)
75W max.

Material:
Aluminium/glass

Dimensions:
L/W/H: 18/18/35 cm

Accessory/Included parts:
Conventional transformer (incl.)

Versions:
silver grey ▼

Art. No.:
230014

Recommended bulb:
75W, 24°, 2700K, 3000cd
543724

BIG DICE G12 Design by CDC/FGL

 230~     3,5-10    9,75 IP55 
HiEFFICIENT
PROFIlight.

Socket/Bulb:
G12/HQI-T; CDM-T (excl.)
70W

Material:
Aluminium/glass

Dimensions:
L/W/H: 18/18/35 cm

Accessory/Included parts:
Conventional ballast (incl.)

Versions:
silver grey ▼

Art. No.:
230024

Recommended bulb:
70W, 3000K, 6600lm
507130

Recommended bulb:
70W, 3000K, 7300lm
507430

ACCESSORY for Big Dice

Earth spike:
Steel galvanized ▼
L/W/D: 18/18/36,5 cm

Art. No.:
228723



LED OUTDOOR BEAM 30W

230~


LED
LEDTEC

Bulb:
Planar LED (incl.)
30W

Material:
Aluminium

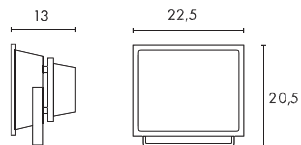
Accessory/Included parts:
LED driver (incl.)
Mains plug IP44 (incl.)
Mains cable-L: 2 m
Note:

We recommend the floor mounting with two earth spikes.

Versions:
 silver grey
 LED white, 2100lm, 6000K
 LED warm white, 1800lm, 3300K
Art. No.:

231111

231112



ACCESSORY for LED Outdoor Beam 30W

**Extension**

Steel galvanised, silver grey

Art. No.:

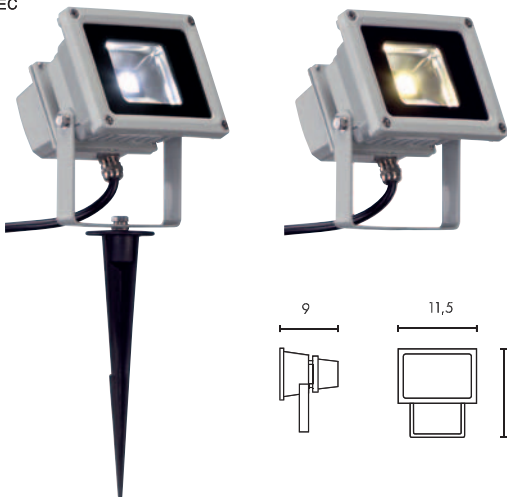
227774

L/W/H: 50,5/2,5/2,5 cm

Base L/W/H: 2/12/0,45 cm

LED OUTDOOR BEAM 10W

230~


LED
LEDTEC

Bulb:
Planar LED (incl.)
10W

Material:
Aluminium

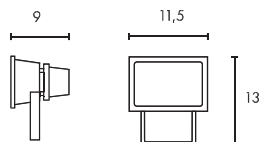
Accessory/Included parts:
LED driver (incl.)
Mains plug IP44 (incl.)
Mains cable-L: 2 m
Note:

We recommend the floor mounting with one earth spike.

Versions:
 silver grey
 LED white, 610lm, 5700K
 LED warm white, 540lm, 3300K
Art. No.:

231101

231102



ACCESSORY for LED Outdoor Beam 10/30W

**Earth spike**
 Plastic
 black
 Spike-L: 17,5 cm
Art. No.:

900011





SXL COMPACT G9

230~



IP44



Socket/Bulb:
G9/G9 (excl.)
2x 42W max.
or
G9/EnergySaver (excl.)
2x 9W max.

Material:
Aluminium/glass

Dimensions:
W/H/D: 18/23,5/6,5 cm

Versions:
silver grey

Art. No.:
227804

Recommended bulb:
9W, 4000K, 405lm, EEK=A
508941



Recommended bulb:
42W EnergySaver
519360



SXL COMPACT R7s

230~



IP44



Socket/Bulb:
R7s/R7s, 118 mm (excl.)
130W max.

Material:
Aluminium/glass

Dimensions:
W/H/D: 18/23,5/6,5 cm

Versions:
silver grey

Art. No.:
227814

Recommended bulb:
130W EnergySaver \approx 200W
2600lm, 2700K, EEK=C
519222



SXL COMPACT GU6,5

230~



IP44



HiEFFICIENT
PROFIlighT.



Socket/Bulb:
GU6,5/CMHT (excl.)
20W

Material:
Aluminium/glass

Dimensions:
W/H/D: 18/23,5/6,5 cm

Accessory/Included parts:
Electronic ballast (incl.)

Versions:
silver grey

Art. No.:
227824

Recommended bulb:
20W, 3000K, 1615lm
507020







SXL II E27


Socket/Bulb:
E27/EnergySaver (excl.)
up to max. Ø/L: 6,6/17,3 cm
24W max.

Material:
Aluminium

Dimensions:
W/H/D: 22/30/16 cm

Versions:
black
silver grey

Art. No.:
227760
227764

Recommended bulb:
23W, 2700K, 1350lm, EEK=A
508770


SXL II 2x 26W


Socket/Bulb:
G24q-3/TC-DE EnergySaver (excl.)
2x 26W

Material:
Aluminium

Dimensions:
W/H/D: 22/30/16 cm

Accessory/Included parts:
Electronic ballast (incl.)

Versions:
black
silver grey

Art. No.:
227750
227754

Recommended bulb:
26W, 3000F, 1800lm, EEK=B
508222


ACCESSORY for SXL II flood light


Extension
Steel galvanized, black
Steel galvanized, silver grey

Art. No.:
227770
227774

L/W/H: 50,5/2,5/2,5 cm
Base-L/W/H:
12/12/0,45 cm

SXL ECO asymmetrical


Socket/Bulb:
E27/EnergySaver (excl.)
up to max. Ø/L: 5,2/17,5 cm
2x 24W max.

Material:
Aluminium

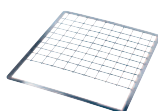
Dimensions:
W/H/D: 31/42/12,5 cm

Note:
Asymmetric reflector.

Versions:
silver grey

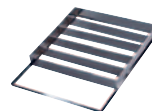
Art. No.:
229192

Recommended bulb:
23W, 2700K, 1350lm, EEK=A
508770


ACCESSORY for SXL Eco


Protective grid
Steel galvanized,
chrome
L/W/H: 20/18,5/3,2 cm

Art. No.:
229009



Diffuser
Steel galvanized, chrome
L/W/H: 32,6/25,6/3,1 cm

Art. No.:
229008



Extension rod
Steel, black
Steel, white
Steel, silver grey

Art. No.:
227690
227691
227698

L/W/H: 80,5/3/3 cm
Base-L/W: 12/12 cm


SXL HIT-DE FLOOD LIGHT 70W asymmetrical

230~


**HiEFFICIENT
PROFIlight.**

Socket/Bulb:
Rx7s/HQI-TS; CDM-TS (excl.)
70W

Material:
Aluminium

Dimensions:
W/H/D: 31/42/12,5 cm

Accessory/Included parts:
Conventional ballast (incl.)

Note:
Asymmetric reflector.

Versions:
silver grey

Art. No.:
229044

Recommended bulb:
70W, 3000K, 6000lm
509070

SXL HIT-DE FLOOD LIGHT 150W asymmetrical

230~


**HiEFFICIENT
PROFIlight.**

Socket/Bulb:
Rx7s/HQI-TS; CDM-TS (excl.)
150W

Material:
Aluminium

Dimensions:
W/H/D: 31/42/12,5 cm

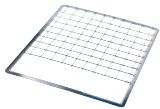
Accessory/Included parts:
Conventional ballast (incl.)

Note:
Asymmetric reflector.

Versions:
black
white
silver grey

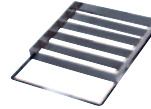
Art. No.:
229000
229001
229002

Recommended bulb:
150W, 3000K, 12000lm
509150

ACCESSORY for SXL HIT-DE flood light 70W / 150W

Protective grid
Steel galvanized ▼
chrome

Art. No.:
229009

L/W/H: 20/18,5/3,2 cm


Diffuser
Steel galvanized
chrome

Art. No.:
229008

L/W/H: 32,6/25,6/3,1 cm


Extension rod
Steel, black
Steel, white
Steel, silver grey

Art. No.:
227690
227691
227698

 L/W/H: 80,5/3/3 cm
Base-L/W: 12/12 cm

SXL HIT FLOOD LIGHT 400W asymmetrical

230~


**HiEFFICIENT
PROFIlight.**

Socket/Bulb:
E40/HIT (excl.)
400W

Material:
Aluminium

Dimensions:
W/H/D: 41/54/16,5 cm

Accessory/Included parts:
Conventional ballast (incl.)

Note:
400W flood light can only be used
as uplight!
Asymmetric reflector.

Versions:
silver grey

Art. No.:
229012

Recommended bulb:
400W, 4200K, 42000lm
510400


The HIT/HQI outdoor floodlights are equipped with a normal safety glass. To ensure an UV-protection a bulb equipped with UV filter glass to protect against harmful UV rays must be used. For further questions to the topic UV protection please do not hesitate to contact us.



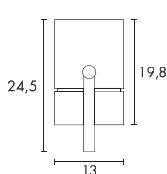
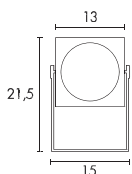
FLAC BEAM® HQI 70W

230~

**HiEFFICIENT**
PROFIlight.**Socket/Bulb:**
G12/HQI-T; CDM-T (excl.)
70W**Versions:**
silver grey**Art. No.:**
230054**Material:**
Aluminium**Dimensions:**
Head-Ø: 20/26 cm
Base-L/W: 15/15 cm**Accessory/Included parts:**
Conventional ballast (incl.)**Recommended bulb:**
70W, 3000K, 6600lm
507130**Recommended bulb:**
70W, 3000K, 7300lm
507430

THEOS SPOT Design by CDC

230~

**HiEFFICIENT**
PROFIlight.**Socket/Bulb:**
GU6,5/CMH-T (excl.)
35W**Versions:**
silver grey**Art. No.:**
230665**Material:**
Aluminium**Accessory/Included parts:**
Electronic ballast (incl.)
Protective contact plug (incl.)
Earth spike (excl.)
Mains cable-L: 1,5 m**Recommended bulb:**
35W, 3000K, 3300lm
507030

EASYLITE® SPOT G12

230~

**HiEFFICIENT**
PROFIlight.**Socket/Bulb:**
G12/HQI-T; CDM-T (excl.)
70W**Versions:**
stone grey**Art. No.:**
230595**Material:**
Aluminium**Dimensions:**
Product-H: 29 cm
Head-Ø/L: 18/25 cm
Base-Ø/H: 19/11,5 cm**Accessory/Included parts:**
Conventional ballast (incl.)
Earth spike (excl.)**Note:**
Lamp head is rotatable by loosening
the bolted connection in the
connection box.**Recommended bulb:**
70W, 3000K, 6600lm
507130**Recommended bulb:**
70W, 3000K, 7300lm
507430

ACCESSORY for Theos Spot

**Earth spike**
Plastic
black
Spike-L: 17,5 cm**Art. No.:**
900011

ACCESSORY for Easylite® Spot G12

**Earth spike**
Plastic
black
Spike-L: 25 cm**Art. No.:**
230630





BIG THEO FLOOR Design by CDC

230~



IP44



Socket/Bulb:
GU10/ES111 (excl.)
75W max.

Material:
Aluminium/glass

Dimensions:
W/H/D: 13/15/13 cm
Mains cable-L: 1,5 m

Accessory/Included parts:
Protective contact plug (incl.)

Versions:
silver grey ▼

Art. No.:
229594

Recommended bulb:
75W, 24°, 2800K, 3500cd
575540

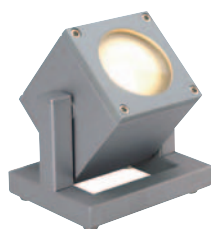


CUBIX I

230~



IP44



Socket/Bulb:
GU10/GU10 (excl.)
35W max.

Material:
Aluminium/protective galvanized,
varnished

Dimensions:
W/H/D: 10,5/14/11 cm
Mains cable-L: 1,5 m

Accessory/Included parts:
Protective contact plug (incl.)

Versions:
silver grey

Art. No.:
132832

Recommended bulb:
35W, 50°, 2700K, 270cd
575351



Recommended bulb:
PowerLED 3W, 100lm, warm white
550892

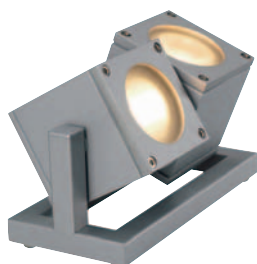


CUBIX II

230~



IP44



Socket/Bulb:
GU10/GU10 (excl.)
2x 35W max.

Material:
Aluminium/protective galvanized,
varnished

Dimensions:
W/H/D: 18/14/11 cm
Mains cable-L: 1,5 m

Accessory/Included parts:
Protective contact plug (incl.)

Versions:
silver grey

Art. No.:
132842

Recommended bulb:
35W, 50°, 2700K, 270cd
575351



Recommended bulb:
PowerLED 3W, 100lm, warm white
550892



EASYLITE® SPOT GU10

230~



IP44



Socket/Bulb:
GU10/GU10 (excl.)
50W max.

Material:
Aluminium

Dimensions:
Product-H: 20 cm
Head-Ø/L: 10/15 cm
Base-Ø/H: 10/5 cm

Note:
Lamp head is rotatable by loosening
the bolted connection in the
connection box.

Versions:
stone grey

Art. No.:
230525

Recommended bulb:
35W EnergySaver ≙ 50W
20°, 2800K, 1200cd
575370



ACCESSORY for Easylite® Spot GU10



Earth spike
Plastic
black
Spike-L: 25 cm

Art. No.:
230630





NAUTILUS IP67



Socket/Bulb:
G5,3/MR16 (excl.)
35W max.

Material:
Aluminium

Dimensions:
Lamp-H: 10 cm
Head-Ø: 9,7 cm
Supply line-L: 3 m

Recommended accessory:
Earth spike, plastic black
Spike-L: 17,5 cm
900011

Accessory/Included parts:
Transformer (excl.)

Versions:
silver grey

Art. No.:
227500

Recommended bulb:
35W, 38°, 2700K, 810cd
536338



Recommended transformer:
IP44 Conv. transformer, 150VA, 12V~
227150



When connecting several lamps, please pay attention to the total wattage!
Further transformers can be found in the accessory range from page 596 onward.

NAUTILUS MR16 STAINLESS STEEL



Socket/Bulb:
G5,3/MR16 (excl.)
35W max.

Material:
Stainless steel 304

Dimensions:
Lamp-Ø/H: 10/12,5 cm
Head-Ø: 9 cm
Supply line-L: 1,5 m

Accessory/Included parts:
Transformer (excl.)

Versions:
silver grey

Art. No.:
229090

Recommended bulb:
35W, 38°, 2700K, 810cd
536338



Recommended transformer:
IP44 Conv. transformer, 150VA, 12V~
227150



When connecting several lamps, please pay attention to the total wattage!
Further transformers can be found in the accessory range from page 596 onward.

EASYLITE® SPOT MR16



Socket/Bulb:
GU5,3/MR16 (excl.)
50W max.

Material:
Aluminium

Dimensions:
Product-H: 20,5 cm
Head-Ø/L: 10/15 cm
Base-Ø/H: 13/8 cm

Accessory/Included parts:
Transformer (incl.)

Note:
Lamp head is rotatable by loosening
the bolted connection in the
connection box.

Versions:
stone grey

Art. No.:
230505

Recommended bulb:
50W, 40°, 2700K, 1500cd
536540



Recommended accessory:
Earth spike, plastic black
Spike-L: 25 cm
230630







ACCESSORY for EasyLite® Spots



Earth spike
Plastic
black
Spike-L: 25 cm

Art. No.:
230630

Lamp heads of the EasyLite® spots are rotatable by loosening the bolted connection in the connection box.

EASYLITE® SPOT QRB111



Socket/Bulb:
G53/QRB111 (excl.)
50W max.

Material:
Aluminium

Dimensions:
Product-H: 23,5 cm
Head-Ø/L: 15,5/23 cm
Base-Ø/H: 13/8 cm

Accessory/Included parts:
Transformer (incl.)

Versions:
stone grey

Art. No.:
230555

Recommended bulb:
50W EnergySaver # 75W
545752, 24°, 3000K, 5800cd



EASYLITE® SPOT ES111



Socket/Bulb:
GU10/ES111 (excl.)
75W max.

Material:
Aluminium

Dimensions:
Product-H: 23,5 cm
Head-Ø/L: 15,5/23 cm
Base-Ø/H: 13/8 cm

Versions:
stone grey

Art. No.:
230575

Recommended bulb:
75W, 24°, 2700K, 2000cd
575672



EASYLITE® SPOT E27



Socket/Bulb:
E27/EnergySaver (excl.)
up to max. Ø/L: 4,5/13,5 cm

Material:
Aluminium

Dimensions:
Product-H: 25,5 cm
Head-Ø/L: 18/25 cm
Base-Ø/H: 13/8 cm

Versions:
stone grey

Art. No.:
230615

Recommended bulb:
11W, 2700K, 530lm, EEK=A
508950





NAUTILUS PAR38 STAINLESS STEEL

230~



IP65



Socket/Bulb:
E27/PAR38 (excl.)
80W max.

Material:
Stainless steel 304

Dimensions:
Lamp-H: 25 cm
Head-Ø: 15,5 cm
Supply line-L: 1,5 m

Note:
Open cable end.

Versions:
stainless steel

Art. No.:
229100

Recommended bulb:
80W, 30°, 2500K
519760



Recommended bulb:
20W EnergySaver
10000cd, 2700K
519620





NAUTILUS LED STAINLESS

230~ 46 pce. IP67

LED
LEDTEC



Bulb:
LED (incl.)
4,6W total

Accessory/Included parts:
Mains plug (incl.)

Material:
Stainless steel 304

Versions:
stainless steel brushed
LED white
LED warm white

Art. No.:
229731
229732

Dimensions:
Lamp-H: 17 cm
Head-Ø/L: 14,3/8,5 cm
Base-Ø/H: 9,5/0,8 cm
Mains cable-L: 1,5 m



ACCESSORY for Nautilus LED stainless



Earth spike
Plastic
black
Spike-L: 17,5 cm

Art. No.:
900011

NAUTILUS LED 304B

230~ 3 pce. IP55

LED
LEDTEC



Bulb:
PowerLED (incl.)
3x 1W

Accessory/Included parts:
LED driver (incl.)

Material:
Stainless steel 304

Note:
Supply line with open cable end.

Dimensions:
Lamp-W/H/D: 10/14,5/9,5 cm
Head-Ø/L: 10/9,5 cm
Base-Ø/H: 9,5/0,8 cm
Supply line-L: 1,5 m

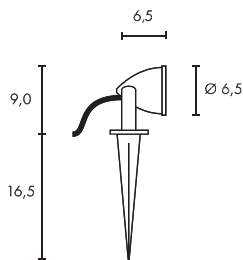
Versions:
stainless steel brushed
LED white
LED warm white

Art. No.:
230801
230802




NAUTILUS SPIKE LED COMPACT

 230~  1 pce.   360°  180°  30°  0,47  IP44 


Bulb:
 PowerLED (incl.)
 3,3W (230V-LED)

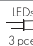


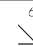



Versions:
 silver grey
 LED white
 LED warm white

Art. No.:
 231021
 231022

Material:
 Aluminium/plastic spike

Accessory/Included parts:
 Mains plug (incl.)
 Mains cable-L: 1,5 m

NAUTILUS SPIKE LED

 230~  3 pce.   270°  60°  0,7  IP44 


Bulb:
 PowerLED (incl.)
 3x 1W

Versions:
 silver grey
 LED white
 LED warm white

Art. No.:
 230271
 230272

Material:
 Aluminium/plastic spike

Dimensions:
 Head-Ø/H: 6,5/19 cm
 Spike-L: 16,5 cm
 Mains cable-L: 1,5 m

Accessory/Included parts:
 LED driver (incl.)
 Mains plug (incl.)

NAUTILUS LED 304S

 230~  3 pce.   360°  270°  45°  0,65  IP55 


Bulb:
 PowerLED (incl.)
 3x 1W

Versions:
 stainless steel brushed
 LED white
 LED warm white

Art. No.:
 230811
 230812

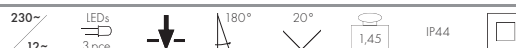
Material:
 Stainless steel 304/plastic spike

Dimensions:
 W/H/D: 10/14,5/9,5 cm
 Head-Ø/L: 10/9,5 cm
 Mains cable-L: 1,5 m

Accessory/Included parts:
 LED driver (incl.)
 Mains plug (incl.)



LED OUTDOOR SPIKE SET



LED
LEDTEC



Bulb:
PowerLED (incl.)
3x 1W, 10W total

Material:
Aluminium

Dimensions:
Head-Ø/L: 3,5/5 cm
Rod-L: 36,5 cm
Supply line-L: 1,7 m per spot

Accessory/Included parts:
Conventional transformer (incl.)
Distributor (incl.)

Note:
The floor lamp set consists of three ready-to-plug lamps. Transformer connection 2 m primary/1 m secondary.

Versions:	Art. No.:
alu natural	230281
LED white	230282
LED warm white	230282

MINIPOL LED



LED
LEDTEC



Bulb:
PowerLED (incl.)
3,3W (230V LED)

Material:
Aluminium/acrylic

Dimensions:
Ø/H: 7/11 cm (230241)
Ø/H: 7/30 cm (230243)
Head-Ø: 5 cm
Base-Ø/H: 7/1,2 cm
Supply line-L: 1,5 m

Accessory/Included parts:
Plastic spike (incl.)
Protective contact plug (incl.)

Versions:	Art. No.:
alu natural/LED warm white	230241
Minipol LED 11 cm	230241

Minipol LED 30 cm	230243
-------------------	--------

SITRA EARTH SPIKE Design by CDC



Socket/Bulb:
GX53/GX53 EnergySaver (excl.)
9W max.
or LED GX53, 1,2W (excl.)
or PowerLED GX53, 3x 1,4W (excl.)

Material:
Aluminium
Plastic spike

Dimensions:
W/H/D: 17/27/10 cm
Spike-L: 17,5 cm
Supply line-L: 1,5 m

Accessory/Included parts:
Protective contact plug (incl.)

Versions:	Art. No.:
stone grey	230374
anthracite	230375

Recommended bulb:
9W, 2700K, 260lm
508860



Recommended bulb:
3x 1,4W PowerLED, warm white
3250K, 270lm
550092







EASYLITE® SPIKE GU10



230~



160°

0,75

IP43



Socket/Bulb:
GU10/GU10 (excl.)
50W max.

Material:
Aluminium

Dimensions:
Product-H: 45,5 cm
Head-Ø/L: 10/15 cm
Spike-H: 15 cm
Mains cable-L: 1,2 m

Accessory/Included parts:
Mains plug (incl.)

Versions:
stone grey

Art. No.:
230545

Recommended bulb:
35W EnergySaver Δ 50W
20°, 2800K, 1200cd
575370



Recommended bulb:
PowerLED 3W, 150lm, warm white
550842





Nautilus Spike XL with LED GU10 5W bulb (550522 see page 612)

NAUTILUS SPIKE



230~ IP65

Socket/Bulb: GU10/GU10 (excl.) 35W max.

Versions: silver grey

Art. No.: 227418

Material: Aluminium Plastic spike

Recommended bulb: 35W, 50°, 2700K, 270cd 575351



Dimensions: Head-Ø/L: 9,5/10 cm Spike-L: 17,5 cm Mains cable-L: 1,5 m

Accessory/Included parts: Mains plug (incl.)

NAUTILUS SPIKE XL



230~ IP65

Socket/Bulb: GU10/GU10 EnergySaver (excl.) or GU10 LED (excl.) up to max. L: 8,3 cm

Versions: black

Art. No.: 227410

Material: Aluminium Plastic spike

Recommended bulb: 11W EnergySaver, 2700K, 220lm 508920



Dimensions: Head-Ø/L: 9,5/15,5 cm Spike-L: 17 cm Mains cable-L: 1,5 m

Recommended bulb: PowerLED 3W, 150lm, warm white 550842



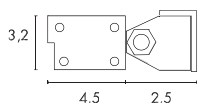
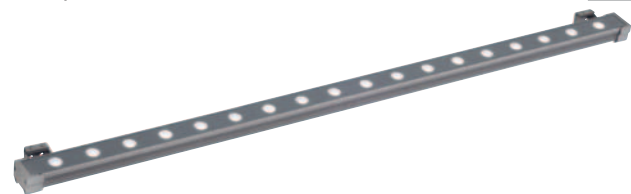
Accessory/Included parts: Mains plug (incl.)



When connecting several profiles, please pay attention to the total wattage!
Further power units, drivers and controllers can be found in the accessory range from page 587 onward.

GALEN LED PROFILE 100 cm

24-



Bulb:
PowerLED (incl.)
18x 1W

Material:
Aluminium/glass

Dimensions:
L/W/H: 100/7/3,2 cm
Supply line-L: 1,5 m

Note:
Power consumption 25W

Accessory/Included parts:
Power unit (excl.)
Wall mounting material (incl.)

Versions:
silver grey
LED white
LED warm white

Art. No.:
229481
229482

Recommended power unit:
Power unit 36W, 24V-
470544

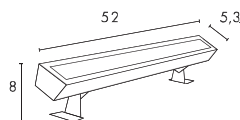


Recommended power unit:
Power unit 60W, 24V-
470506



GALEN LED PROFILE

350mA



Bulb:
PowerLED (incl.)
15x 1W

Material:
Aluminium/glass

Accessory/Included parts:
LED driver (excl.)
Supply line-L: 1,5 m

Note:
Power consumption 15W

Versions:
alu anodized
LED white
LED warm white

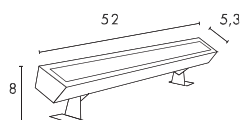
Art. No.:
229461
229462

Recommended LED driver:
LED driver 18W, 350mA
464111



GALEN RGB LED PROFILE

350mA



Bulb:
PowerLED (incl.)
5x red, green, blue
15x 1W

Material:
Aluminium/glass

Dimensions:
L/W/H: 52/5,3/8 cm
Supply line-L: 1,5 m

Accessory/Included parts:
LED driver (excl.)
Controller (excl.)

Note:
Power consumption 15W

Versions:
alu anodized
LED RGB, colour control

Art. No.:
229463

Recommended controller:
Power: LIM[®]2 RGB
Master controller
21W, 350mA
470583



Recommended controller:
Power: LIM[®]2 RGB
Slave controller
21,3W, 350mA
470584



Suitable remote control:
470520







Further controllers can be found in the accessory range from page 587 onward.

GALEN LED PANEL 24V, 36 LED



Bulb:
PowerLED (incl.)
12x red, green, blue
36x 1W

Material:
Aluminium/glass

Dimensions:
W/H/D: 27,5/23,5/15,5 cm
Supply line-L: 5 m

Accessory/Included parts:
Power unit (excl.)
Controller (excl.)

Note:
Power consumption 50W.
When connecting several panels,
please pay attention to the total
wattage!

Versions:
silver grey
LED RGB, colour control

Art. No.:
229493

Recommended controller:
Power LIM®2 RGB
Master controller
60W max., 24V=
470581



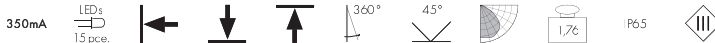
Recommended controller:
Power LIM®2 RGB
Slave controller
60W max., 24V=
470582



Suitable remote control:
470520



KETO RGB LED ROUND



Bulb:
PowerLED (incl.)
5x red, green, blue
15x 1W

Material:
Aluminium/glass

Dimensions:
W/H/D: 17/18/6 cm
Base-Ø: 10 cm
Supply line-L: 1,5 m

Accessory/Included parts:
LED driver (excl.)
Controller (excl.)

Note:
Power consumption 15W.

Versions:
black
LED RGB, colour control

Art. No.:
229453

Recommended controller:
Power LIM®2 RGB
Master controller
21W, 350mA
470583



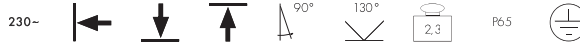
Recommended controller:
Power LIM®2 RGB
Slave controller
21,3W, 350mA
470584



Suitable remote control:
470520



RGB FLOOD 30W



Bulb:
Planar LED, 3in1 RGB (incl.)
30W

Material:
Aluminium/glass

Dimensions:
W/H/D: 22,5/20,5/13 cm
Mains cable-L: 2 m

Accessory/Included parts:
Controller (excl.)
LED driver (incl.)
PWM converter (incl.)
Control line 2m (incl.)
Mains plug IP44 (incl.)

Note:
For the connection to LIM®2
controller

Versions:
silver grey
LED RGB, colour control
1-10V

Art. No.:
231113

Recommended controller:
LIM®2 Controller
4x1-10V control signal
470531



Suitable remote control:
470530





When connecting several lamps, please pay attention to the total wattage!
Further drivers can be found in the accessory range from page 592 onward.

EYEDOWN LED 3x 1W

350mA



IP44



LED
LEDTEC



Bulb:
PowerLED (incl.)
3x 1W

Material:
Aluminium/glass

Dimensions:
Ø/H: 6,8/4,3 cm
Supply line-L: 45 cm

Accessory/Included parts:
Plug (incl.)
LED driver (excl.)

Recommended LED driver:
LED driver 18W, 350mA
464111



Note:
Suitable for cavity ceilings with a material thickness of max. 30 mm. When connecting several lamps, please take care of a series connection.

Versions: alu anodized
LED warm white, 190lm

Art. No.: 111982

Suitable connector strip:
111850



EYEDOWN LED 6x 1W

350mA



IP44



LED
LEDTEC



Bulb:
PowerLED (incl.)
6x 1W

Material:
Aluminium/glass

Dimensions:
Ø/H: 8,8/5,2 cm
Supply line-L: 45 cm

Accessory/Included parts:
Plug (incl.)
LED driver (excl.)

Recommended LED driver:
LED driver 18W, 350mA
464111



Note:
Suitable for cavity ceilings with a material thickness of max. 30 mm. When connecting several lamps, please take care of a series connection.

Versions: alu anodized
LED warm white, 400lm

Art. No.: 111992

Suitable connector strip:
111850





When connecting several lamps, please pay attention to the total wattage!
Further transformers can be found in the accessory range from page 596.

DORU

12~



IP65



Socket/Bulb:
G5,3/MR16 (excl.)
20W max.

Material:
Aluminium/glass

Dimensions:
Cover-Ø: 8,5 cm

Recommended transformer:
IP44 Transformer, 60VA, 12V~
227160



Accessory/Included parts:
Transformer (excl.)

Versions:
Glass satined
alu natural

Art. No.:
111432

Recommended bulb:
20W, 40°, 2700K, 450cd
535240



CALU

12~



IP65



Socket/Bulb:
G5,3/MR16 (excl.)
20W max.

Material:
Aluminium/glass

Dimensions:
Cover-Ø: 8,6 cm

Note:
Not suitable for direct mirror bulbs.

Recommended transformer:
IP44 Transformer, 60VA, 12V~
227160



Accessory/Included parts:
Transformer (excl.)

Versions:
Glass satined
alu brushed/varnished

Art. No.:
111542

Recommended bulb:
20W, 40°, 2700K, 450cd
535240



OUT 65

12~



IP65



Socket/Bulb:
G5,3/MR16 (excl.)
35W max.

Material:
Aluminium/glass

Dimensions:
Cover-Ø: 8,5 cm

Accessory/Included parts:
Transformer (excl.)

Recommended transformer:
IP44 Transformer, 60VA, 12V~
227160



Versions:
Glass clear
white

chrome brushed
silver grey

Art. No.:
111011

111018
111019

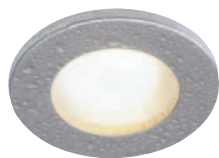
Recommended bulb:
35W, 38°, 2700K, 810cd
536338





FGL OUT MR16, ROUND

12~



titanium



Socket/Bulb:
G5,3/MR16 (excl.)
35W max.

Material:
Aluminium/glass

Dimensions:
Cover-Ø: 8 cm

Accessory/Included parts:
Transformer (excl.).

Recommended transformer:

IP44 Transformer, 60VA, 12V~
227160



Versions:
Glass satined
white

chrome
titanium
silver grey

Art. No.:
111001

111002
111007
111008

When connecting several lamps, please pay attention to the total wattage!
Further transformers can be found in the accessory range from page 596
onward.

FGL OUT MR16, SQUARE

12~



silver grey



Socket/Bulb:
G5,3/MR16 (excl.)
35W max.

Material:
Aluminium/glass

Dimensions:
Cover-W/L: 8,9/8,9 cm

Accessory/Included parts:
Transformer (excl.).

Recommended transformer:

IP44 Transformer, 60VA, 12V~
227160



Versions:
Glass satined
white

chrome
titanium
silver grey

Art. No.:
111121

111122
111127
111128

When connecting several lamps, please pay attention to the total wattage!
Further transformers can be found in the accessory range from page 596
onward.

FGL OUT GU10, ROUND

230~



silver grey



Socket/Bulb:
GU10/GU10 (excl.)
35W max.

Material:
Aluminium/glass

Dimensions:
Cover-Ø: 8 cm

Note:
Suitable for ceilings with a material
thickness of max. 15 mm.

Versions:
Glass satined
white
chrome
silver grey
titanium

Art. No.:
111021
111022
111024
111027

Recommended bulb:
35W, 20°, 2800K, 1200cd
575370



FGL OUT GU10, SQUARE

230~



chrome



Socket/Bulb:
GU10/GU10 (excl.)
35W max.

Material:
Aluminium/glass

Dimensions:
Cover-W/L: 9/9 cm

Note:
Suitable for ceilings with a material
thickness of max. 15 mm.

Versions:
Glass satined
white
chrome
silver grey
titanium

Art. No.:
111141
111142
111144
111147

Recommended bulb:
35W, 20°, 2800K, 1200cd
575370





PL-DL IP65

230~



Socket/Bulb:
G24d-3/
TC-D EnergySaver (excl.)
2x 26W

Material:
Plastic

Dimensions:
Outer-Ø: 21,5 cm
L/W/H: 38/20,5/11,4 cm

Accessory/Included parts:
Low-loss ballast (incl.)

Versions:
white

Art. No.:
227226

Recommended bulb:
26W, 2700K, 1800lm, EEK=B
508226



RAPIDO Out/electronic ballast

230~



Socket/Bulb:
G24q-3/
TC-DE EnergySaver (incl.)
2x 26W

Material:
Front Aluminium

Dimensions:
Outer-Ø: 23 cm
L/W/H: 30/19/14 cm

Accessory/Included parts:
Osram electronic ballast (incl.)
Protective glass (incl.)
2x bulb 3000K, EEK=B (incl.)

Versions:
silver grey

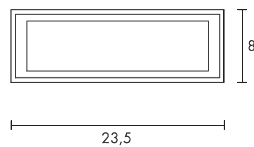
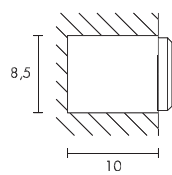
Art. No.:
227326

Note:
Permissible temperature range in mounting area 5°C-50°C.
IP44 can be achieved when the ceiling surface is closed.



ALDA

230~



Socket/Bulb:
G24d-2/TC-D EnergySaver (excl.)
18W

Material:
Aluminium/plastic

Dimensions:
W/H/D: 23,5/8/10 cm

Accessory/Included parts:
Low-loss ballast (incl.)
Mounting pot (incl.)

Versions:
stone grey

Art. No.:
230415

Recommended bulb:
18W, 2700K, 1200lm, FFK=B
508218



BRICK MESH STAINLESS STEEL

230~



Socket/Bulb:
G23/TC-S EnergySaver (excl.)
9W

Material:
Stainless steel 304/glass

Dimensions:
W/H/D: 26/7,6/9 cm

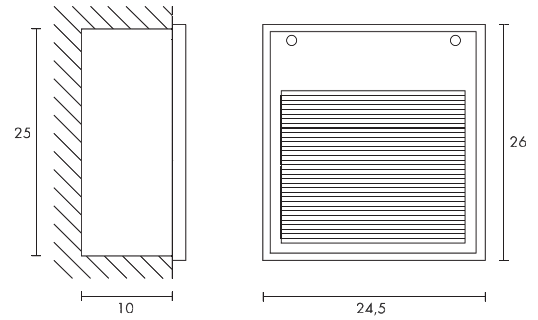
Accessory/Included parts:
Low-loss ballast (incl.)
Mounting pot (incl.)

Versions:
Stainless steel

Art. No.:
229250

Recommended bulb:
9W, 2700K, 600lm, FFK=A
508209





Installation sketch
Downunder Out TC-D

BRICK DOWNUNDER E14



Socket/Bulb:
E14/AGL candle shape (excl.)
40W max.
or
E14/EnergySaver (excl.)
up to max. Ø/L: 4,8/13 cm

Material:
Aluminium

Dimensions:
W/H/D: 22,7/12,5/8,5 cm

Note:
No mounting pot needed!

Versions:
silver grey

Art. No.:
229062

Recommended bulb:
11W, 2700K, 530lm, EEK=A
508810



DOWNUNDER OUT TC-D



Socket/Bulb:
G24d-3/TC-D EnergySaver (excl.)
26W

Material:
Aluminium

Dimensions:
W/H/D: 24,5/26/10 cm

Accessory/Included parts:
Low-loss ballast (incl.)
Mounting pot (incl.)

Note:
Mounting only with light emission
downwards.

Versions:
silver grey

Art. No.:
230424

Recommended bulb:
26W, 2700K, 1800lm, EEK=B
508226



BRICK DOWNUNDER G9



Socket/Bulb:
G9/G9 (excl.)
40W max.

Material:
Aluminium

Dimensions:
W/H/D: 10,5/17/7 cm

Accessory/Included parts:
Mounting pot (incl.)

Versions:
silver grey

Art. No.:
229712

Recommended bulb:
33W EnergySaver ≈ 40W
2700K, 460lm, EEK=C
519451





BRICK MESH LED

230~



IP54



Bulb:
LED (incl.)
8,5W total

Material:
Aluminium/glass

Dimensions:
visible W/H/D: 20,5/9,5/8 cm

Accessory/Included parts:
Mounting pot (incl.)

Versions:
silver grey
LED white
LED warm white

Art. No.:
230481
230482

BRICK LED 24 STAINLESS STEEL

230~



IP54



Bulb:
SMD LED (incl.)
5W total

Material:
Stainless steel 304/glass

Dimensions:
W/H/D: 16,5/10,5/7,5 cm

Accessory/Included parts:
Mounting pot (incl.)

Versions:
Stainless steel brushed
LED white
LED warm white

Art. No.:
229121
229122



BRICK LED DOWNUNDER

230~



18 pce.



IP54



Bulb:
SMD LED (incl.)
3,6W total

Material:
Aluminium

Dimensions:
W/H/D: 17/10,5/7 cm

Accessory/Included parts:
Mounting pot (incl.)

Versions:
silver grey
LED white
LED warm white

Art. No.:
229701
229702

BRICK LED 16 STAINLESS STEEL

230~



16 pce.



IP44



Bulb:
LED (incl.)
1W total

Material:
Stainless steel 304/plastic

Dimensions:
W/H/D: 17/6,8/8 cm

Accessory/Included parts:
Mounting pot (incl.)

Versions:
stainless steel brushed
LED white
LED warm white
LED blue

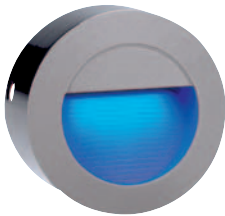
Art. No.:
230231
230232
230237



DOWNUNDER LED 14

230~ IP44

LED
LEDTEC



Bulb:
SMD LED (incl.)
0,8W total

Material:
Aluminium

Dimensions:
Ø/D: 12,5/6 cm
Flush-mounted box-Ø/D: 12/7,2 cm

Accessory/Included parts:
Flush-mounted box (incl.)

Versions:
stone grey
LED white
LED warm white
LED blue

alu brushed
LED white
LED warm white

Art. No.:
230201
230202
230207

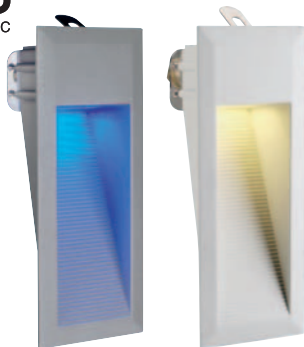
230301
230302

Note:
IP44 only with light emission downwards.
Flush-mounted box for the use in masonry walls.

DOWNUNDER LED 15

230~ IP44

LED
LEDTEC



Bulb:
SMD LED (incl.)
0,9W total

Material:
Aluminium

Dimensions:
W/H/D: 9/23/7,5 cm
Flush-mounted box-W/H/D:
9,5/23,5/9 cm

Accessory/Included parts:
Flush-mounted box (incl.)

Versions:
stone grey
LED white
LED warm white
LED blue

alu brushed
LED white
LED warm white

white
LED warm white

Art. No.:
230211
230212
230217

230311
230312

230182

Note:
IP44 only with light emission downwards.
Flush-mounted box for the use in masonry walls.

DOWNUNDER LED 27

230~ IP44

LED
LEDTEC



Bulb:
SMD LED (incl.)
1,8W total

Material:
Aluminium

Dimensions:
W/H/D: 18/23/7,5 cm
Flush-mounted box-W/H/D:
18,5/23,5/9 cm

Accessory/Included parts:
Flush-mounted box (incl.)

Versions:
stone grey
LED white
LED warm white

white
LED warm white

Art. No.:
230221
230222

230192

Note:
IP44 only with light emission downwards.
Flush-mounted box for the use in masonry walls.



LED SKY PLOT Design by CDC

12~



IP67



Bulb:
SMD LED (incl.)
1W total

Material:
Aluminium/acrylic

Dimensions:
Ø/H: 8/1,6 cm
Supply line-L: 1,5 m

Accessory/Included parts:
Conventional transformer (excl.)

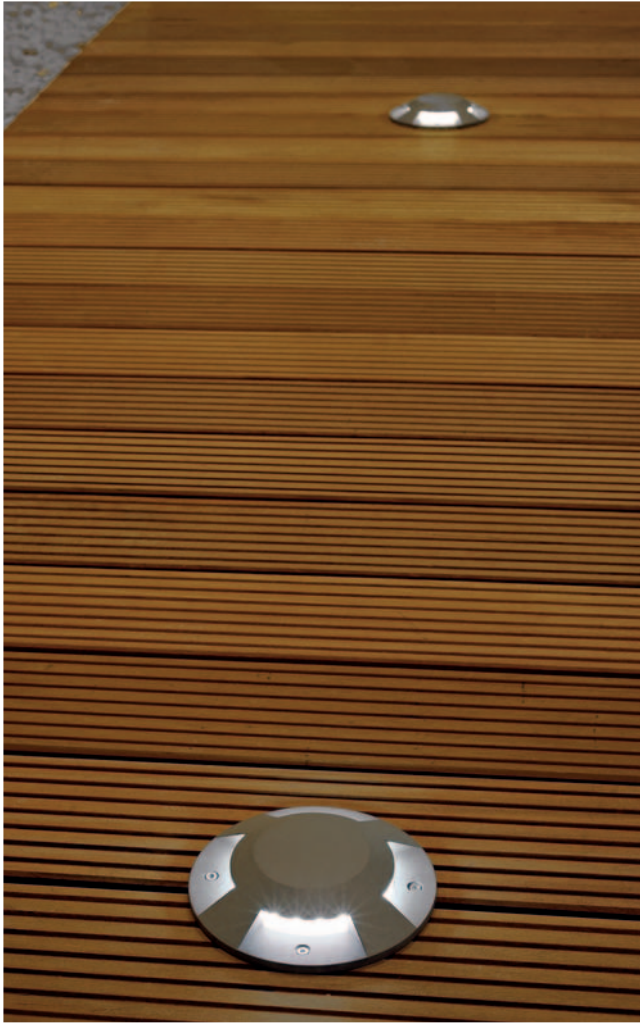
Versions:
alu anodized
LED white
LED warm white
LED blue

Art. No.:
227391
227392
227397

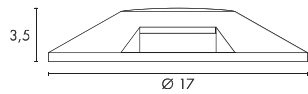
Note:
Operate only with conventional transformer! When connecting several lamps, please pay attention to the total wattage! Further transformers can be found in the accessory range from page 596 onward.

Recommended transformer:
IP44 Transformer 10VA/12V~
451010





BIG LED PLOT ROUND



Material:
Aluminium

Dimensions:
Cover-Ø/H: 17/3,5 cm

Accessory/Included parts:
Ground protective ring (incl.)
LED insert (excl.)

Versions:
silver grey
1 slot
2 slots
4 slots

Art. No.:
227371
227372
227374

Select the plot cover with 1, 2, or 4 light exit openings (slots). Then select the LED insert (see below) with the desired light colour.

LED INSERT for Big LED Plot round



Bulb:
SMD LED (incl.)
3,8W total

Material:
Plastic PC

Dimensions:
Ø/H: 13/3,1 cm
Supply line-L: 1,5 m

Accessory/Included parts:
Transformer (excl.)

Note:
Operate only with conventional transformer!

Versions:
LED white
LED warm white
LED blue

Art. No.:
550331
550332
550337

Recommended transformer:
IP44 Transformer 10VA/12V-451C10



Connection box round
2 conductions for thin lines 6-9,5 mm²
229260



When connecting several lamps, please pay attention to the total wattage! Further transformers can be found in the accessory range from page 596 onward.



LED PLOT SQUARE Design by CDC

**Material:**
Aluminium**Dimensions:**
Cover L/W/H: 7/7/1,8 cm**Accessory/Included parts:**
Ground protective ring (incl.)
LED insert (excl.)**Versions:**
silver grey
1 slot
2 slots
4 slots**Art. No.:**
227441
227442
227444

Select the plot cover with 1, 2, or 4 light exit openings (slots). Then select the LED insert (see below) with the desired light colour.

LED PLOT ROUND Design by CDC

**Material:**
Aluminium**Dimensions:**
Cover-Ø/H: 8,7/1,8 cm**Accessory/Included parts:**
Ground protective ring (incl.)
LED insert (excl.)**Versions:**
silver grey
1 slot
2 slots
4 slots**Art. No.:**
227381
227382
227384

Select the plot cover with 1, 2, or 4 light exit openings (slots). Then select the LED insert (see below) with the desired light colour.

GLASS PLOT

**Material:**
Glass, inside satined**Dimensions:**
Cover-Ø/H: 9,25/2,2 cm**Accessory/Included parts:**
Ground protective ring (incl.)
LED insert (excl.)**Note:**
Can not be walked on!**Versions:**
frosted**Art. No.:**
227400

LED INSERT for LED Plot Round, Square and Glass Plot Design by CDC

**Bulb:**
LED (incl.)
2,6W total**Material:**
Plastic PC**Dimensions:**
Ø/H: 6,2/1,4 cm
Supply line-L: 1,5 m**Accessory/Included parts:**
Transformer (excl.)**Versions:**
LED white
LED warm white
LED red
LED blue**Art. No.:**
550211
550212
550216
550217**Recommended transformer:**
IP44 Transformer 10VA/12V~
451010**Connection box round**
2 conductions for thin
lines 6-9,5 mm²
229260When connecting several lamps, please pay attention to the total wattage!
Further transformers can be found in the accessory range from page 596 onward.**Note:**
Operate only with conventional transformer!



LED STONE Q3

230~



16 pcs.



10/10



6,5



0,5



0,36



IP67




Bulb:
LED (incl.)
3W total

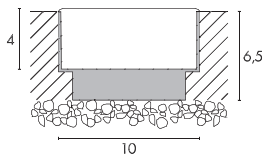
Material:
Plastic

Dimensions:
L/W/H: 10/10/4 cm
Supply line-L: 25 cm

Accessory/Included parts:
Mounting pot (incl.)
LED driver (incl.)
Heat-shrink tubing (incl.)
2 crimp connectors (incl.)

Versions:
LED white
LED warm white

Art. No.:
227341
227342



LED TILE

230~



36 pcs.



20/10



8,5



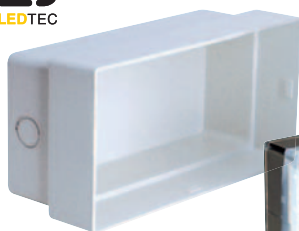
0,5



1,05



IP67

Bulb:
LED (incl.)
3,5W total

Material:
Plastic

Dimensions:
L/W/H: 20/10/4 cm
Supply line-L: 25 cm

Accessory/Included parts:
Mounting pot (incl.)
LED driver (incl.)
Connection box (excl.)

Versions:
LED white
LED warm white

Art. No.:
227331
227332

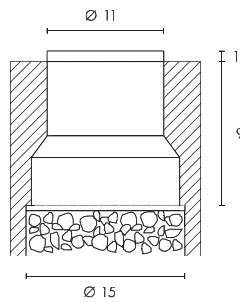
Connection box IP68
Cable-Ø: 6-12mm
228730



Note:
In the extra deep mounting pot is also space for the connection box.



DASAR® WHITE Design by CDC



Bulb:
LED (incl.)
1,2W total

Material:
PP

Dimensions:
Lamp-Ø/H: 11/10 cm

Note:
Can not be walked on!

Accessory/Included parts:
Mounting pot (incl.)
LED driver (incl.)

Versions:
white
LED white, 5000K

Art. No.:
228381

DASAR® WHITE+ Design by CDC



Bulb:
LED (incl.)
1,2W total

Material:
PP/stainless steel 304

Dimensions:
Lamp-Ø/H: 11/10,5 cm

Note:
Can not be walked on!

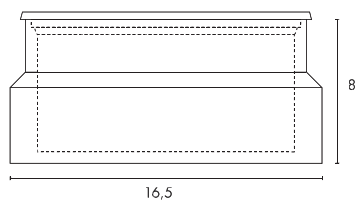
Accessory/Included parts:
Mounting pot (incl.)
LED driver (incl.)

Versions:
white/stainless steel brushed
LED white, 5000K

Art. No.:
228391



Dimensioned drawing of the mounting pot for Dasar® GX53 and Dasar® 115 LED.



DASAR® GX53



Socket/Bulb:
GX53/GX53 EnergySaver (excl.)
9W max.
or LED GX53, 1,4W (excl.)

Material:
Aluminium
Cover stainless steel 316

Dimensions:
Ø/H: 8,3/8 cm
Cover-Ø: 13 cm

Accessory/Included parts:
Mounting pot (incl.)

Versions:
stainless steel

Art. No.:
229360

Recommended bulb:
9W, 2700K, 260lm
508860



DASAR® 115 LED



Bulb:
LED (incl.)
6W total

Material:
Aluminium
Cover stainless steel 316

Dimensions:
Ø/H: 8,3/8 cm
Cover-Ø: 13 cm

Note:
Operate only with conv. transformer.

Versions:
stainless steel
LED white
LED blue

Art. No.:
229311
229317

Recommended transformer:
IP44 Transformer 10VA/12V-
451C10



When connecting several lamps, please pay attention to the total wattage!
Further transformers can be found in the accessory range from page 596 onward.

Accessory/Included parts:
Mounting pot (incl.)
Conventional transformer (excl.)

DASAR® 9x 1W LED



Bulb:
PowerLED (incl.)
9x 1W

Material:
Aluminium/stainless steel 304

Dimensions:
Lamp-Ø/H: 15/11 cm

Accessory/Included parts:
Mounting pot (incl.)
LED driver (incl.)

Versions:
stainless steel brushed
LED white
LED warm white

Art. No.:
230151
230152

DASAR® FLAT LED Design by CDC



Bulb:
LED (incl.)
0,8W total

Material:
Cover stainless steel 304

Dimensions:
Ø/H: 8/4,8 cm
Cover-Ø: 8 cm
Supply line-L: 2 m

Versions:
stainless steel brushed
LED white
LED warm white

Art. No.:
228401
228402

Recommended transformer:
IP44 Transformer 10VA/12V-
451C10



When connecting several lamps, please pay attention to the total wattage!
Further transformers can be found in the accessory range from page 596 onward.

Accessory/Included parts:
Mounting pot (incl.)
Conventional transformer (excl.)







When connecting several lamps, please pay attention to the total wattage! Further transformers can be found in the accessory range from page 596.



TRAIL-LITE Design by CDC

12~ 4 pce. 4 7 28°C 0,15 IP65



Version with satined glass insert



Version with diffuser „cat eye“



Bulb:
LED (incl.)
0,3W total

Material:
Cover stainless steel 316

Dimensions:
Lamp-Ø/H: 3,6/6 cm
Cover-Ø: 6 cm
Sleeve-Ø/H: 4/7 cm
Supply line-L: 44 cm

Accessory/Included parts:
Installation sleeve (incl.)
Conventional transformer (excl.)

Note:
Operate only with conventional transformer!

Versions:	Art. No.:
Cover stainless steel with satined glass insert	
LED white	227461
LED warm white	227462
LED blue	227467

with diffuser „cat eye“	
LED white	227471
LED warm white	227472

Recommended transformer:
IP44 Transformer 10VA/12V~
451010



POWER TRAIL-LITE

350mA 1 pce. 4 9 30°C 0,3 IP67



Bulb:
PowerLED (incl.)
1W

Material:
Cover stainless steel 316

Dimensions:
Lamp-Ø/H: 2,8/6,5 cm
Cover-Ø: 4,1 cm
Sleeve-Ø/H: 3,9/9 cm
Supply line-L: 2 m

Accessory/Included parts:
Installation sleeve (incl.)
LED driver (excl.)

Note:
Operate only with driver/electronic ballast 350mA.
When connection several PowerLEDs, please take care of a series connection.

Versions:	Art. No.:
Stainless steel with glass insert	
LED white	228331
LED warm white	228332
LED blue	228337

Recommended LED driver:
LED driver 3W, 350mA
464108
19,90 €



Connection box round
2 conductions for thin lines 6-9,5 mm²
229260





When connecting several lamps, please pay attention to the total wattage! Further transformers can be found in the accessory range from page 596 onward.

AQUADISC G4



Aquadisc G4 with Octagon LED module



Socket/Bulb:
G4/pin socket (excl.)
20W max.

Material:
Aluminium/structure glass
Cover stainless steel 316

Dimensions:
Cover-Ø: 13 cm
Mounting pot-Ø/H: 12,5/5 cm
Supply line-L: 1,5 m

Accessory/Included parts:
Mounting pot (incl.)
Transformer (excl.).

Note:
Can not be walked on!

Versions:
stainless steel brushed

Art. No.:
227080

Recommended bulb:
20W, 330lm, 2700K
512220



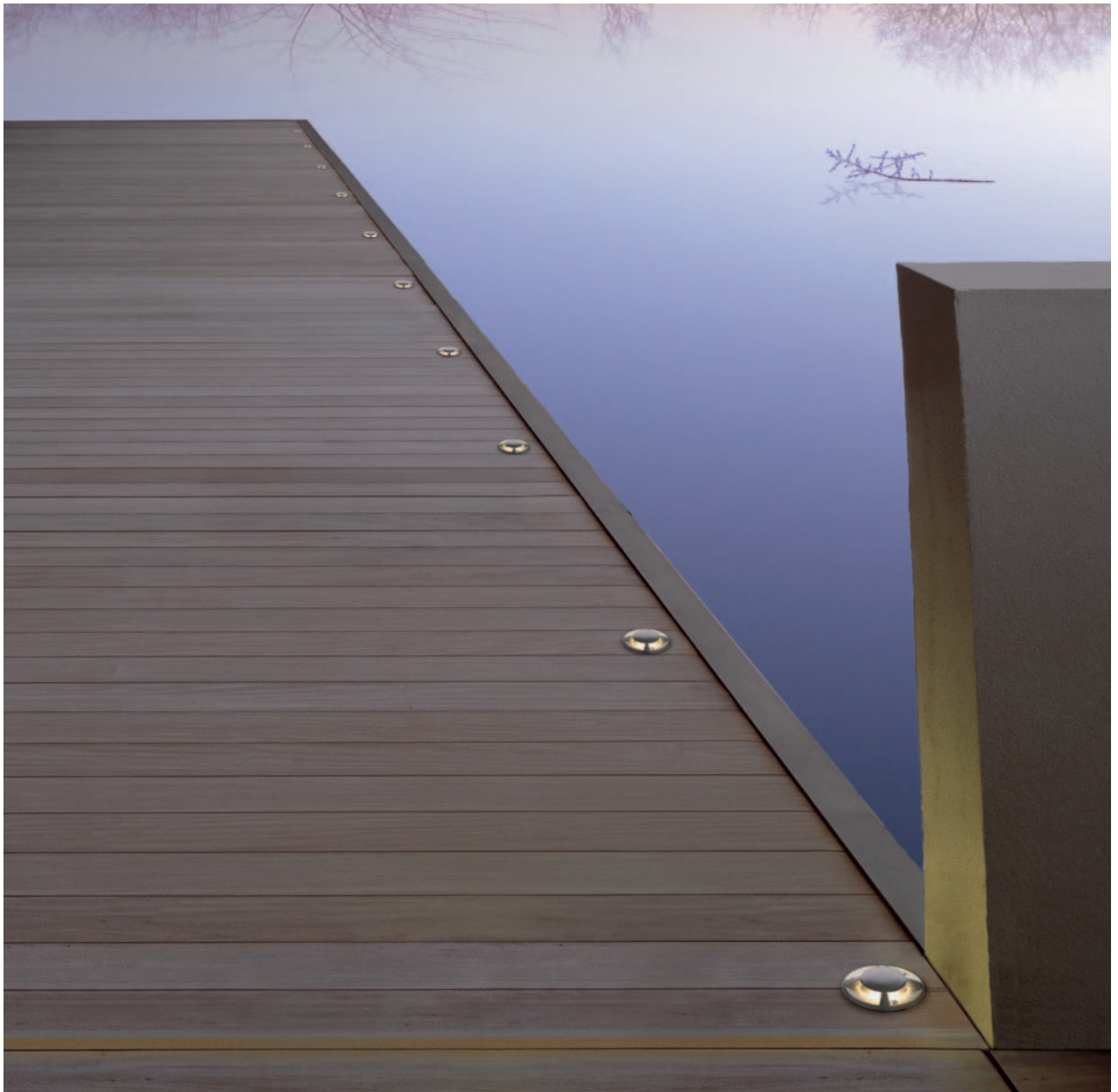
ACCESSORY for Aquadisc G4 for the modification to LED technology



Octagon LED module 12V~ Art. No.:
white, 21lm 550251
warm white, 19lm 550252
1,5W total
Conv. transformer (excl.)
Operate only with conventional
transformer (see right).



Recommended transformer: Art. No.:
IP44 Transf. 10VA/12V~ 451010
L/W/H: 5,5/8/5 cm
Prime conductor-L: 2 m
Plug (incl.)
Secondary conductor-L: 2 m
For up to 6 Octagon LED module 12V.



When connecting several lamps, please pay attention to the total wattage! Further transformers can be found in the accessory range from page 596 onward.

AQUADOWN MICRO

12V- 9,2 10 83°C 0,8 l IP67



Socket/Bulb:
G4/MR11 (excl.)
20W max.

Material:
Aluminium

Dimensions:
Cover-Ø: 9,3 cm
Lamp-H: 9,2 cm
Mounting pot-Ø/H: 12/10 cm
Supply line-L: 1,5 m

Accessory/Included parts:
Mounting pot (incl.)
Transformer (excl.)

Versions:

- 1 slot
- 2 slots
- 4 slots

Art. No.:

- 228301
- 228302
- 228304

Recommended bulb:
20W, 30°, 2700K, 450cd
533228



Recommended transformer:
IP44 Transformer, 60VA, 12V-
227160




GIMBLE OUT 90 Design by CDC


When connecting several lamps, please pay attention to the total wattage! Further transformers can be found in the accessory range from page 596 onward.



Socket/Bulb:
G5,3/MR16 (excl.)
35W max.

Material:
Aluminium/glass

Dimensions:
Ø/H: 15/12 cm
Cover-Ø: 15 cm

Accessory/Included parts:
Mounting pot (incl.)
Transformer (excl.)

Note:
Can not be walked on.

Versions:
alu brushed

Art. No.:
228360

Recommended bulb:
35W, 38°, 2700K, 810cd
536338


RECOMMENDED TRANSFORMER for Gimble Out and N-Tic


IP44 Transf. 60VA/12V~
L/W/H: 6/10/6,3 cm
Prime conductor-L: 2 m,
Plug (incl.)
Secondary conductor-L: 1 m

Art. No.:
227160

For 1 Gimble Out/N-Tic.



IP44 Transf. 150VA/12V~
L/W/H: 8/11/7,5 cm
Prime conductor-L: 2 m,
Plug (incl.)
Secondary conductor-L: 1 m

Art. No.:
227150

For up to 4 Gimble Out/N-Tic.

The transformers are splashproof according to protection class IP44, but they are not suitable for embedding or underwater use.



N-TIC PRO MR16

12~



Note:
The total housing of the N-tic Pro recessed lamps is made of stainless steel cast 316 and is therefore also suitable for professional outdoor applications.



Socket/Bulb:
GU5,3/MR16 (excl.)
35W max.

Material:
Stainless steel 316/glass

Dimensions:
Cover-Ø/D:
13,5/11,5 cm (round)
Cover-L/W/D:
13,5/13,5/11,5 cm (square)

Accessory/Included parts:
Mounting pot (incl.)
Transformer (excl.)

Versions:
stainless steel brushed
square cover
round cover

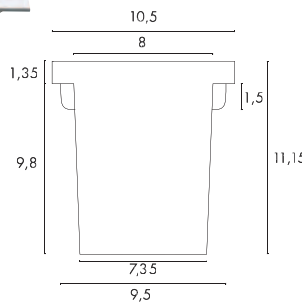
Art. No.:
230904
230900

Recommended bulb:
35W, 38°, 2700K, 810cd
536338



N-TIC ROUND / N-TIC SQUARE

12~



Socket/Bulb:
G5,3/MR16 (excl.)
35W max.

Material:
Aluminium

Dimensions:
Cover-Ø: 11 cm (round)
Cover-L/W: 10,5/10,5 cm (square)
Supply line-L: 2 m

Versions:
Glass clear
silver grey
N-Tic round
N-Tic square

Art. No.:
227450
227457

Recommended bulb:
35W, 38°, 2700K, 810cd
536338



Accessory/Included parts:
Mounting pot (incl.)
Transformer (excl.)

ACCESSORY for N-tic



Stainless steel cover
for N-tic Square
Stainless steel 316
Cover-L/W:
10,5/10,5 cm

Art. No.:
227520

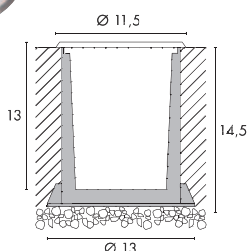


Satin glass
for N-tic square
and round

Art. No.:
924036



DASAR® 115 MR16, rigid



Socket/Bulb:
GU5,3/MR16 (excl.)
35W max.

Material:
Aluminium
Cover stainless steel 3'6

Dimensions:
Ø/H: 8/13 cm
Cover-Ø: 11,5 cm (round)
Cover-L/W: 13/13 cm (square)

Accessory/Included parts:
Mounting pot (incl.)
Transformer (excl.)

Versions:
stainless steel
round cover
square cover

Art. No.:
229340
229344

Recommended bulb:
35W, 38°, 2700K, 810cd
536338



DASAR® 115 MR16, slewable



Socket/Bulb:
GU5,3/MR16 (excl.)
35W max.

Material:
Aluminium
Cover stainless steel 3'6

Dimensions:
Ø/H: 8/16 cm
Cover-Ø: 13 cm (round)
Cover-L/W: 13/13 cm (square)

Accessory/Included parts:
Mounting pot (incl.)
Transformer (excl.)

Versions:
stainless steel
round cover
square cover

Art. No.:
229330
229334

Recommended bulb:
35W, 38°, 2700K, 810cd
536338



RECOMMENDED TRANSFORMER for MR16 35W lamps



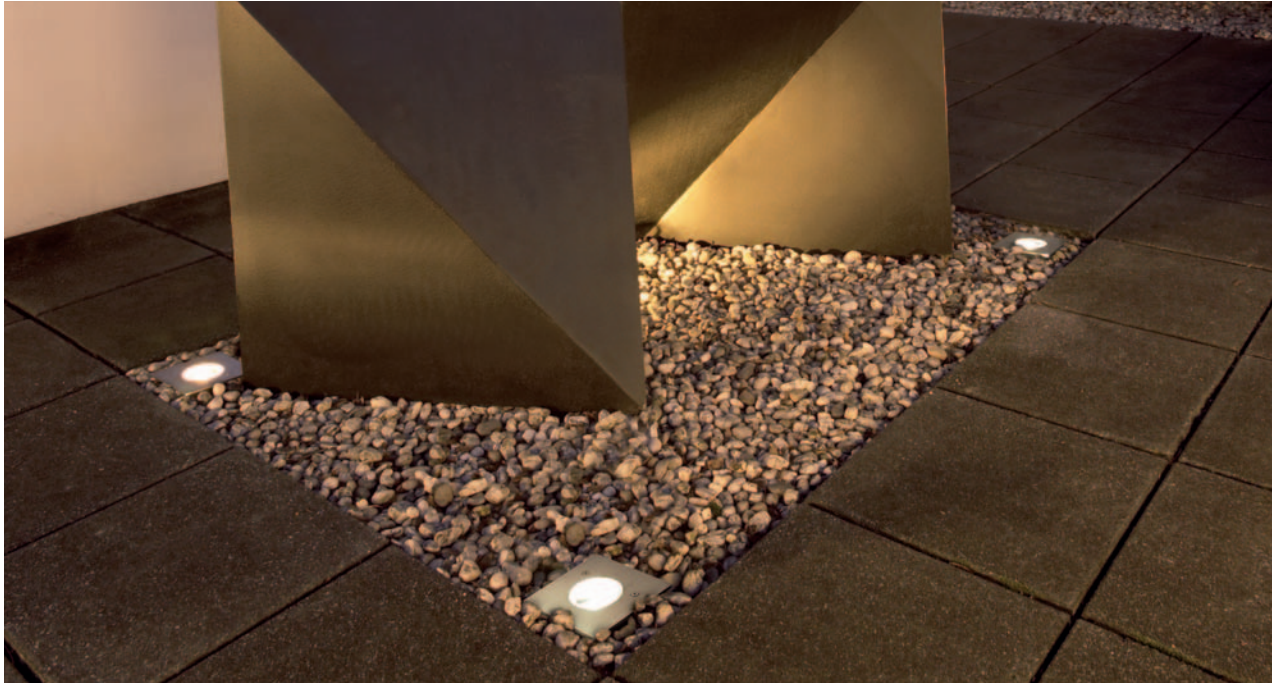
IP44 Transf. 60VA/12V~ Art. No.: 227160
L/W/H: 6/10/6,3 cm
Prime conductor-L: 2 m,
Plug (incl.)
Secondary conductor-L: 1 m
For 1 MR16 lamp with 35W.



IP44 Transf. 150VA/12V~ Art. No.: 227150
L/W/H: 8/11/7,5 cm
Prime conductor-L: 2 m,
Plug (incl.)
Secondary conductor-L: 1 m
For up to 4 MR16 lamps with 35W.

When connecting several lamps, please pay attention to the total wattage! Further transformers can be found in the accessory range from page 596 onward.

The transformers are splashproof according to protection class IP44, but they are not suitable for embedding or underwater use.



DASAR® EXACT MR16

12~



Note:
Dasar® Exact lamps
can be installed flush
with the ground level.



Socket/Bulb:
GU5,3/MR16 (excl.)
35W max.

Versions:
stainless steel brushed
round cover

Art. No.:
228420

Material:
Aluminium
Cover stainless steel 316

square cover

228424

Dimensions:
Ø/H: 11,6/16 cm (round)
L/W/H: 11,6/11,6/16,5 cm (square)

Accessory/Included parts:
Mounting pot (incl.)
Transformer (excl.)

Recommended bulb:
35W, 38°, 2700K, 810cd
536338



ADJUST MR16

12~



Socket/Bulb:
GU5,3/MR16 (excl.)
35W max.

Versions:
stainless steel
square cover
round cover

Art. No.:
227580
227582

Material:
Aluminium
Cover stainless steel 304

Dimensions:
Ø/H: 13,5/11,5 cm (round)
L/W/H: 13,5/13,5/11,5 cm (square)

Accessory/Included parts:
Mounting pot (incl.)
Transformer (excl.)

Recommended bulb:
35W, 38°, 2700K, 810cd
536338



ADJUST QUADRO MR16

12~



Socket/Bulb:
GU5,3/MR16 (excl.)
35W max.

Versions:
stainless steel

Art. No.:
227588

Material:
Aluminium
Cover stainless steel 304

Dimensions:
L/W/H: 13/13/12 cm
Glass insert L/W: 7/7 cm

Accessory/Included parts:
Mounting pot (incl.)
Transformer (excl.)

Recommended bulb:
35W, 38°, 2700K, 810cd
536338





WETSY LED DISK 300



Bulb:
Philips Fortimo LED Disk module (incl.)
9W, 300lm, Ra80

Versions:
stainless steel
round cover
square cover

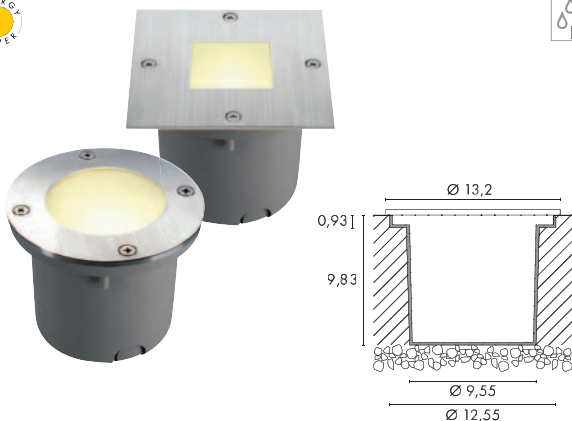
Art. No.:
230170
230174

Material:
Cover stainless steel 3'6

Dimensions:
Cover-Ø: 13,2 cm (round)
Cover-L/W: 13,2/13,2 cm (square)
Supply line-L: 1,4 m

Accessory/Included parts:
Mounting pot (incl.)

WETSY Design by CDC



Socket/Bulb:
GX53/GX53 EnergySaver (excl.)
9W max.
or LED GX53, 1,2W (excl.)
or PowerLED GX53, 3x 1,4W (excl.)

Versions:
stainless steel
round cover
square cover
Window round
Window square

Art. No.:
227485
227490
227495

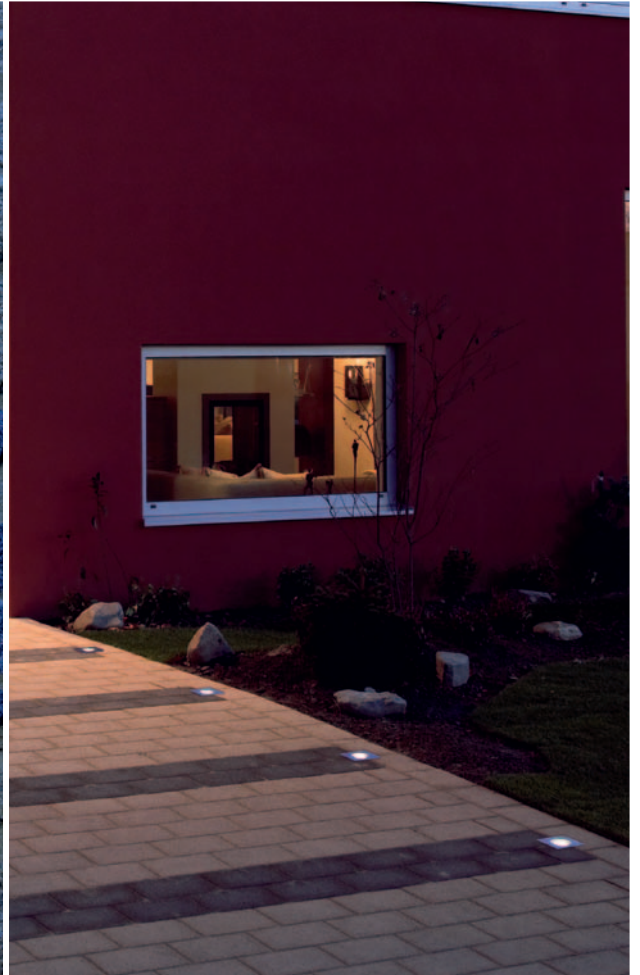
Material:
Aluminium
Cover stainless steel 3'6

Dimensions:
Cover-Ø: 13,2 cm (round)
Cover-L/W: 13,2/13,2 cm (square)
Supply line-L: 1,4 m

Recommended bulb:
9W, 2700K, 260lm
508860



Accessory/Included parts:
Mounting pot (incl.)

**WETSY POWER LED** Design by CDC230~
15A
350LEDs
3 pce.

12,6



10



36°C



11



1,1

IP67

**Bulb:**
PowerLED (incl.)
3x 1W**Material:**
Aluminium
Cover stainless steel 316**Dimensions:**
Cover-L/W: 13,2/13,2 cm (square)
Cover-Ø: 13,2 cm (round)
Supply line-L: 1,4 m**Accessory/Included parts:**
Mounting pot (incl.)
LED driver (incl.)**Versions:**
stainless steel, square cover
LED white
LED warm white
LED blue**Art. No.:**227421
227422
227427stainless steel, round cover
LED white
LED warm white
LED blue227431
227432
227437**WETSY LED 230V** Design by CDC230~
12~

12,6



10



41°C

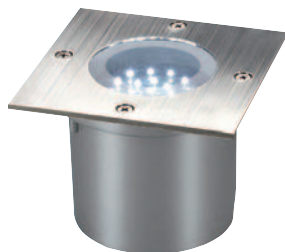
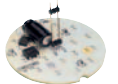


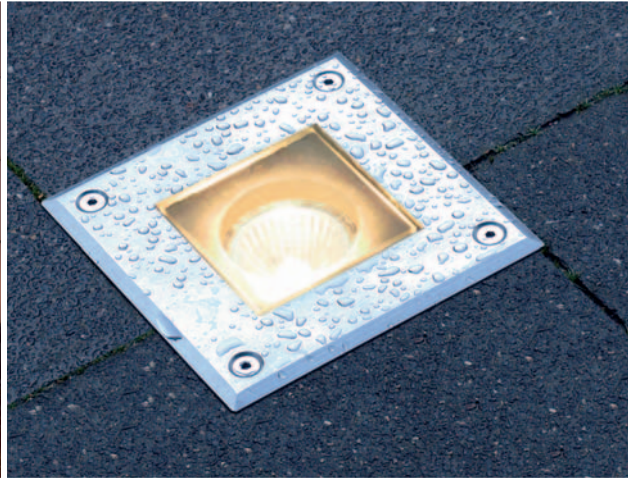
11



1,1

IP67

**Socket/Bulb:**
GX5,3/LED insert 12V (excl.)**Material:**
Aluminium
Cover stainless steel 316**Dimensions:**
Cover-L/W: 13,2/13,2 cm (square)
Cover-Ø: 13,2 cm (round)
Supply line-L: 1,4 m**Accessory/Included parts:**
Mounting pot (incl.)
Transformer (incl.)**Versions:**
stainless steel
square cover
round cover**Art. No.:**227480
227482**Recommended bulb:**
LED insert 12V~, 1,4W total
227531 white, 38lm
227532 warm white, 30lm
227537 blue



ADJUST QUADRO GU10



Socket/Bulb:
GU10/GU10 (excl.)
35W max.

Versions:
stainless steel

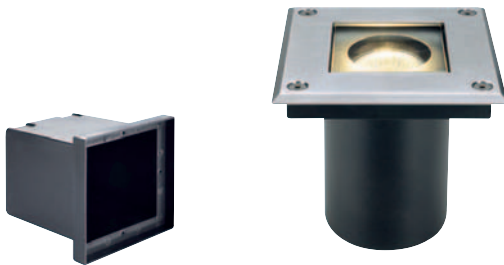
Art. No.:
228218

Material:
Aluminium
Cover stainless steel 304

Recommended bulb:
35W, 50°, 2700K, 270cd
575351

Dimensions:
L/W/H: 13/13/12 cm
Glass insert-L/W: 7/7 cm

Accessory/Included parts:
Mounting pot (incl.)



N-TIC PRO GU10



Socket/Bulb:
GU10/GU10 (excl.)
35W max.

Versions:
stainless steel brushed
round cover
square cover

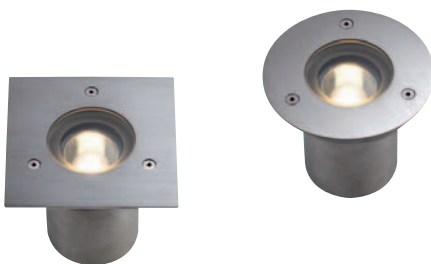
Art. No.:
230910
230914

Material:
Stainless steel 316/glass

Recommended bulb:
35W, 50°, 2700K, 270cd
575351

Dimensions:
Cover-Ø/D:
13,5/11,5 cm (round)
Cover-L/W/D:
13,5/13,5/11,5 cm (square)

Accessory/Included parts:
Mounting pot (incl.)



ADJUST GU10



Socket/Bulb:
GU10/GU10 (excl.)
35W max.

Versions:
stainless steel
round cover
square cover

Art. No.:
228210
228214

Material:
Aluminium
Cover stainless steel 304

Recommended bulb:
35W, 50°, 2700K, 270cd
575351

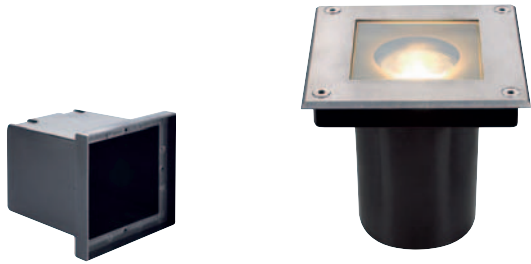
Dimensions:
Ø/H: 13,5/11,5 cm (round)
L/W/H: 13,5/13,5/11,5 cm (square)

Accessory/Included parts:
Mounting pot (incl.)





DASAR® SQUARE GU10



Socket/Bulb:
GU10/GU10 (excl.)
35W max.

Versions:
stainless steel

Art. No.:
229374

Material:
Aluminium
Cover stainless steel 316

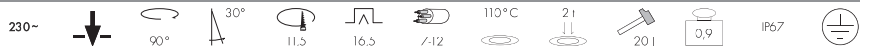
Recommended bulb:
35W, 50°, 2700K, 270cd
575351



Dimensions:
Ø/H: 7/12 cm
Cover-L/W: 13/13 cm

Accessory/Included parts:
Mounting pot (incl.)

DASAR® 115 GU10



Socket/Bulb:
GU10/GU10 (excl.)
35W max.

Versions:
stainless steel
round cover
square cover

Art. No.:
229320
229324

Material:
Aluminium
Cover stainless steel 316

Recommended bulb:
35W, 50°, 2700K, 270cd
575351



Dimensions:
Ø/H: 8/16 cm
Cover-Ø: 13 cm (round)
Cover-L/W: 13/13 cm (square)

Accessory/Included parts:
Mounting pot (incl.)

DASAR® EXACT GU10



Socket/Bulb:
GU10/GU10 (excl.)
35W max.

Versions:
stainless steel brushed
round cover

Art. No.:
228430

Material:
Aluminium
Cover stainless steel 316

square cover

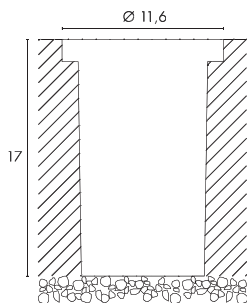
228434

Dimensions:
Ø/H: 11,6/16 cm (round)
L/W/H: 11,6/11,6/16,5 cm (square)

Recommended bulb:
35W, 50°, 2700K, 270cd
575351



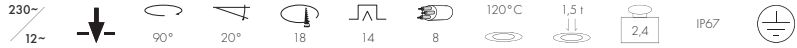
Accessory/Included parts:
Mounting pot (incl.)



Dasar® Exact lamps can be installed flush with the ground level.



ADJUST QRB111



Socket/Bulb:
G53/QRB111 (excl.)
50W max.

Material:
Aluminium
Cover stainless steel 304

Dimensions:
Ø/H: 19/13,5 cm (round)
L/W/H: 19/19/13,5 cm (square)

Accessory/Included parts:
Mounting pot (incl.)
Conventional transformer (incl.)

Versions:
stainless steel
round cover
square cover

Art. No.:
227090
227092

Recommended bulb:
50W EnergySaver ± 75W
545752, 24°, 3000K, 5800cd



DASAR® 260 QRB



Socket/Bulb:
G53/QRB111 (excl.)
75W max.

Material:
Aluminium
Cover stainless steel 316

Dimensions:
Ø/H: 27/32 cm (round)
L/W/H: 27/27/32 cm (square)

Accessory/Included parts:
Mounting pot (incl.)
Conventional transformer (incl.)
Diffusor insert (excl.)

Versions:
stainless steel
round cover
square cover

Art. No.:
229220
229224

Recommended bulb:
75W, 24°, 2700K, 3000cd
543724



DASAR® ES111



Socket/Bulb:
GU10/ES111 (excl.)
75W max.

Material:
Aluminium
Cover stainless steel 316

Dimensions:
Ø/H: 21,5/16 cm (round)
L/W/H: 21,5/21,5/16 cm (square)

Accessory/Included parts:
Mounting pot (incl.)
Diffusor insert (excl.)

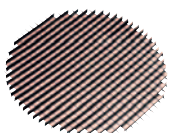
Versions:
stainless steel
round cover
square cover

Art. No.:
229230
229234

Recommended bulb:
75W, 24°, 2700K, 2000cd
575672



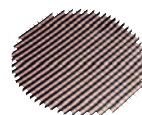
ACCESSORY for Dasar® 260 QRB



Diffusor insert
black
Product-Ø: 19 cm
Angle of radiation: 50°

Art. No.:
229241

ACCESSORY for Dasar® ES111



Diffusor insert
black
Product-Ø: 14 cm
Angle of radiation: 50°

Art. No.:
229240





DASAR® 215 UNI

230~



Surface temperature:
EnergySaver = 48 °C
PAR30 = 119 °C
PAR38 = 108 °C



Socket/Bulb:
E27/EnergySaver (excl.)
up to max. Ø/L: 4,5/13,4 cm
11W max.
or PAR30, 75W max. (excl.)
or PAR38, 80W max. (excl.)

Material:
Aluminium
Cover stainless steel 316

Dimensions:
Ø/H: 21,5/22,5 cm (round)
L/W/H: 21,5/21,5/22,5 cm (square)

Accessory/Included parts:
Mounting pot (incl.)

Versions:
stainless steel
round cover
square cover

Art. No.:
229200
229204

Recommended bulb:
11W, 2700K, 580lm, EEK=A
508211



DASAR® 260 UNI

230~



Socket/Bulb:
E27/EnergySaver (excl.)
up to max. Ø/L: 5,2/17,3 cm
24W max.

Material:
Aluminium
Cover stainless steel 316

Dimensions:
Ø/H: 27/31,5 cm (round)
L/W/H: 27/27/31,5 cm (square)

Accessory/Included parts:
Mounting pot (incl.)

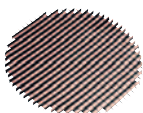
Versions:
stainless steel
round cover ▼
square cover ▼

Art. No.:
229210
229214

Recommended bulb:
20W, 2700K, 1200lm, EEK=A
508760



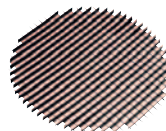
ACCESSORY for Dasar® 215 Uni



Diffusor insert
black
Product-Ø: 14 cm
Angle of radiation: 50°

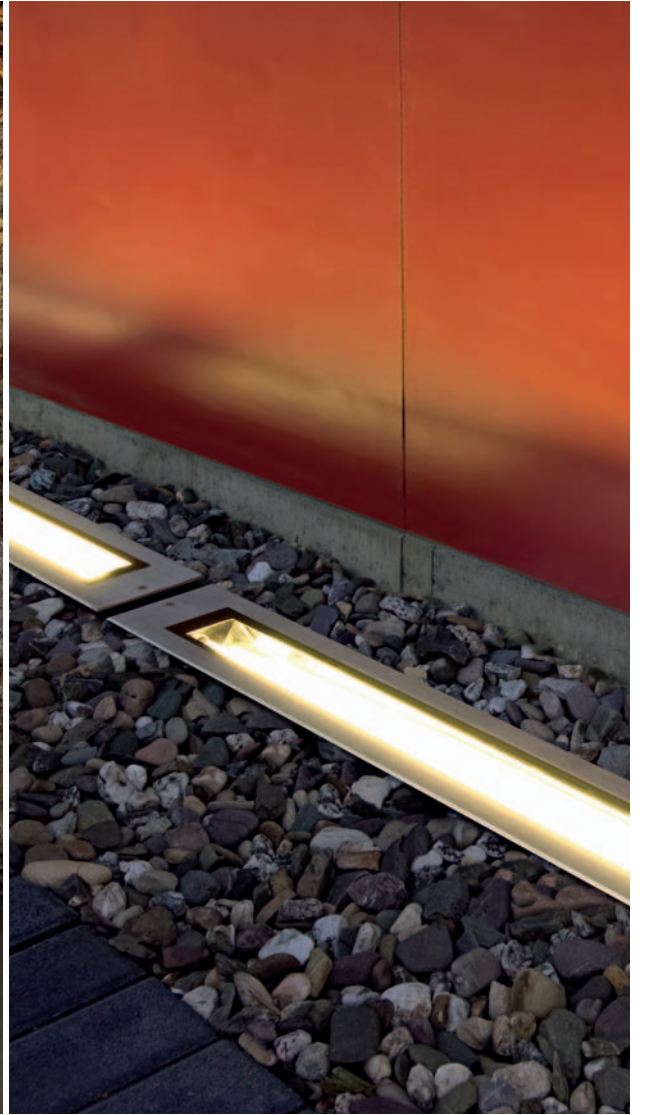
Art. No.:
229240

ACCESSORY for Dasar® 260 Uni



Diffusor insert
black
Product-Ø: 19 cm
Angle of radiation: 50°

Art. No.:
229241



DASAR® T5-14

230~



Socket/Bulb:
G5/T5 EnergySaver (excl.)
14W

Versions:
stainless steel

Art. No.:
230100



Material:
Aluminium/stainless steel 316

Dimensions:
L/W/H: 70/12/9,7 cm
Cover-L/W: 70/12 cm

Recommended bulb:
14W, 3000K, 1230lm
548014

(PU see page 617)

Accessory/Included parts:
Installation profile (incl.)
Electronic ballast (incl.)

DASAR® T5-21

230~



Socket/Bulb:
G5/T5 EnergySaver (excl.)
21W

Versions:
stainless steel

Art. No.:
230110



Material:
Aluminium/stainless steel 316

Dimensions:
L/W/H: 100/12/9,7 cm
Cover-L/W: 100/12 cm

Recommended bulb:
21W, 3000K, 1910lm
548021

(PU see page 617)

Accessory/Included parts:
Installation profile (incl.)
Electronic ballast (incl.)


DASAR® GX10 Design by CDC

230~


HiEFFICIENT
PROFIlight.

Socket/Bulb:
 GX10/CMH-MR16 (excl.)
 20W

Material:
 Aluminium
 Cover stainless steel 316

Dimensions:
 Ø/H: 18/18 cm (round)
 L/W/H: 18/18/18 cm (square)

Accessory/Included parts:
 Electronic ballast (incl.)
 Mounting pot (incl.)

Versions:
 stainless steel
 round cover
 square cover

Art. No.:
 230140
 230144

Recommended bulb:
 20W, 40°, 3000K, 1500cd
 507240

ADJUST HQI 70

230~


HiEFFICIENT
PROFIlight.

Socket/Bulb:
 G12/HQI-T; CDM-T (excl.)
 70W

Material:
 Aluminium
 Cover stainless steel 304

Dimensions:
 Ø/H: 26,5/20 cm (round)
 L/W/H: 26,5/26,5/20 cm (square)

Accessory/Included parts:
 Mounting pot (incl.)
 Conventional ballast (incl.)

Versions:
 stainless steel
 round cover
 square cover

Art. No.:
 228240
 228244

Recommended bulb:
 70W, 3000K, 6600lm
 507130

Recommended bulb:
 70W, 3000K, 7300lm
 507430

DASAR® HIT-T 70W

230~


HiEFFICIENT
PROFIlight.

Socket/Bulb:
 G12/HQI-T; CDM-T (excl.)
 70W

Material:
 Aluminium
 Cover stainless steel 316

Dimensions:
 Ø/H: 26/30 cm (round)
 L/W/H: 27/27/32 cm (square)

Accessory/Included parts:
 Mounting pot (incl.)
 Conventional ballast (incl.)

Versions:
 stainless steel
 round cover
 square cover

Art. No.:
 229270
 229274

Recommended bulb:
 70W, 3000K, 6600lm
 507130

Recommended bulb:
 70W, 3000K, 7300lm
 507430

DASAR® HIT-T 150W

230~


HiEFFICIENT
PROFIlight.

Socket/Bulb:
 G12/HQI-T; CDM-T (excl.)
 150W

Material:
 Aluminium
 Cover stainless steel 316

Dimensions:
 Ø/H: 26/30 cm (round)
 L/W/H: 27/27/32 cm (square)

Accessory/Included parts:
 Mounting pot (incl.)
 Conventional ballast (incl.)

Versions:
 stainless steel
 round cover
 square cover

Art. No.:
 229280
 229284

Recommended bulb:
 150W, 3000K, 14000lm
 507140

Recommended bulb:
 150W, 3000K, 15000lm
 507440




DASAR® HQI SQUARE 70W asymmetrical 230~



HiEFFICIENT
PROFIlight.



Socket/Bulb:
Rx7s/HQI-TS; CDM-TS (excl.)
70W

Versions:
stainless steel

Art. No.:
229294



Material:
Aluminium
Cover stainless steel 316

Recommended bulb:
70W, 4200K, 6000lm
507071



Dimensions:
L/W/H: 25,5/25,5/15,5 cm

Accessory/Included parts:
Mounting pot (incl.)
Conventional ballast (incl.)

Note:
Asymmetric reflector.



DASAR® HIT-DE 150W asym. 230~



HiEFFICIENT
PROFIlight.



Socket/Bulb:
Rx7s/HQI-TS; CDM-TS (excl.)
150W

Versions:
stainless steel
round cover
square cover

Art. No.:
229300
229304



Material:
Aluminium
Cover stainless steel 316

Recommended bulb:
150W, 4200K, 14200lm
507151



Dimensions:
Ø/H: 26/30 cm (round)
L/W/H: 27/27/32 cm (square)

Accessory/Included parts:
Mounting pot (incl.)
Conventional ballast (incl.)

Note:
Asymmetric reflector.

